

From steel to wheel – a story of Faith

The work of our Mechanical Engineer, John Uphill often features in our Work in Progress Reports. What many may not know is that as well as keeping the L&B on the rails, John has built, in his “spare time”, a steam locomotive from scratch. The pictures below give an idea of the skill and effort required.

machining the side frames



frames completed



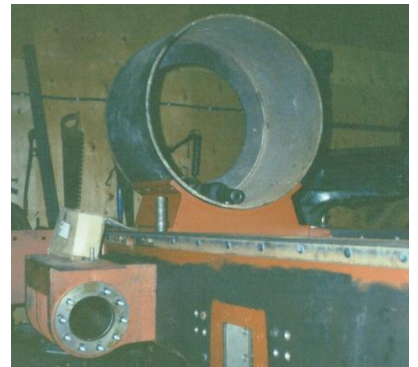
cylinders and valve housings completed



pony truck frame constructed



smoke box, saddle and cylinders completed



boiler assembly completed



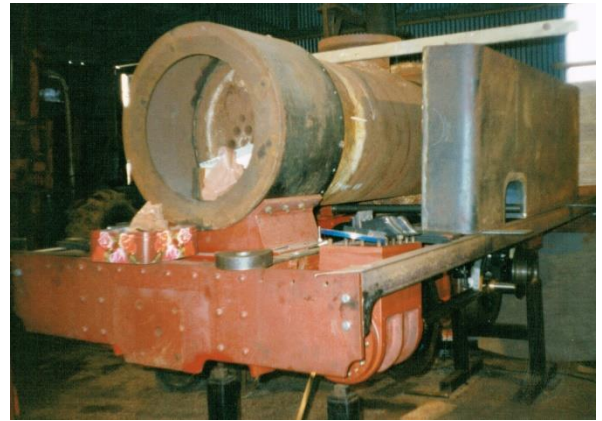
trial boiler assembly to frames



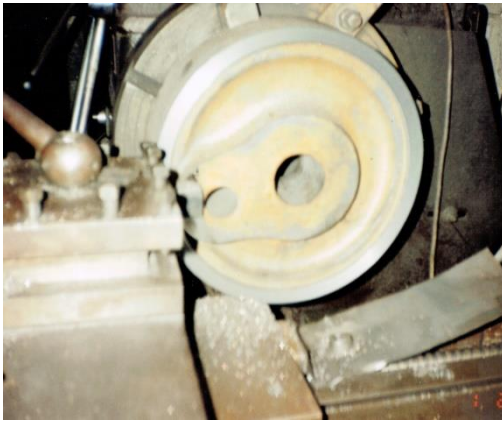
side tanks constructed...



...and trial fitted



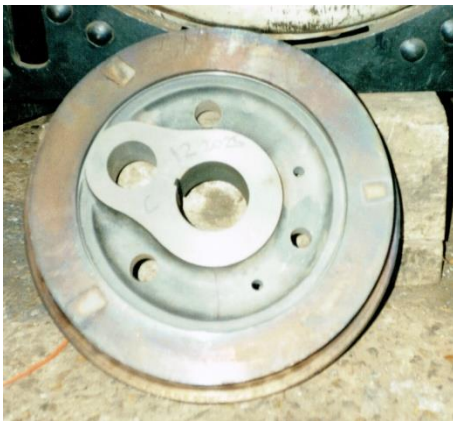
wheels machined



tyres machined



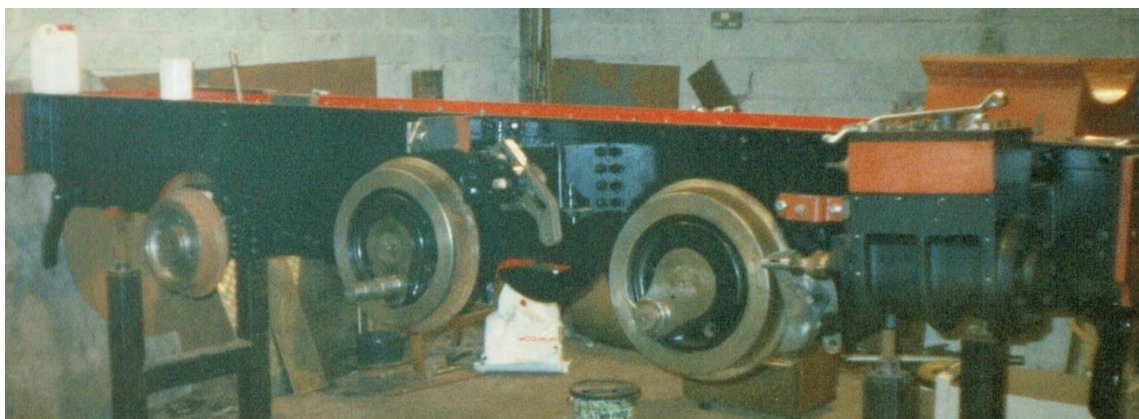
tyres fitted to wheels



and assembled to axles



wheels fitted to frames



And “FAITH” ...the finished article
which is FOR SALE!!!!

